

리테이너
PUNCH RETAINER



RETAINER Contents

■ PUNCH RETAINER

SRT/SRTS	1
BACKING PLATE	2
TCRT/TBRT	3
SW-AR/SW-FR/BP	4

■ SELECT RETAINER

SWA/SWAS	5
SWA-Z/SWAS-Z	7
SWPUG	9
SWPUH	11



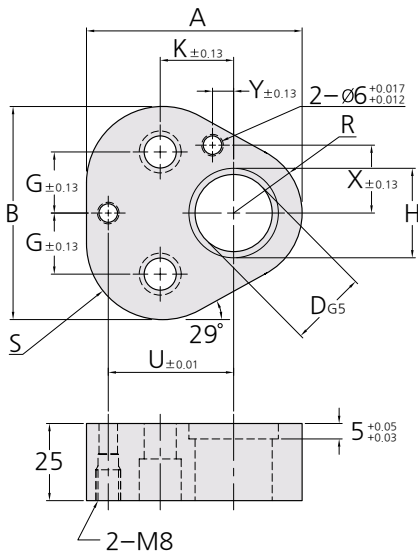
RETAINER - SRT • SRTS PUNCH RETAINER

SRT

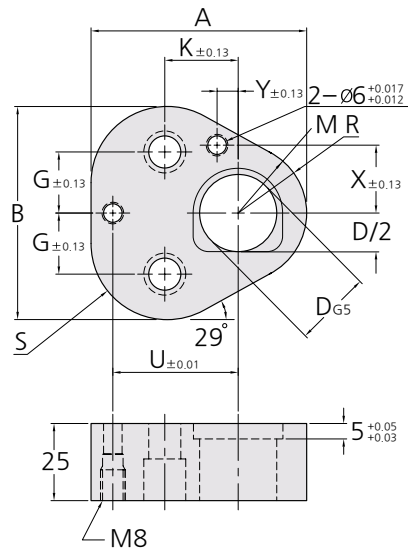
(원형용)

SRTS

(이형용)



(원형용)



(이형용)

재질 S45C

Type	D	A	B	SRT	G	K	SRTS	R	S	U	X	Y	Bolt
				H			M						
SRT	10	44.5	43.7	14.0	11.1	19.0	7.0	9.5	12.0	26.925	9.0	7.5	M8
	13	50.8	50.0	17.0	14.3	19.0	8.5	12.7	15.2	29.970	12.0	6.5	M8
	16	54.0	53.2	20.0	15.9	19.0	10.0	14.3	16.8	31.750	13.5	6.0	M8
SRTS	20	60.3	59.5	24.0	17.5	19.0	12.0	17.5	20.0	33.530	16.5	5.0	M10
	25	69.9	69.1	29.0	19.8	23.8	14.5	22.2	24.7	40.640	22.0	7.0	M12
	32	69.9	69.1	36.0	19.8	23.8	18.0	22.2	24.7	40.640	22.0	7.0	M12

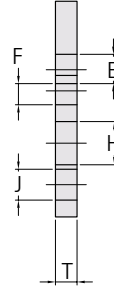
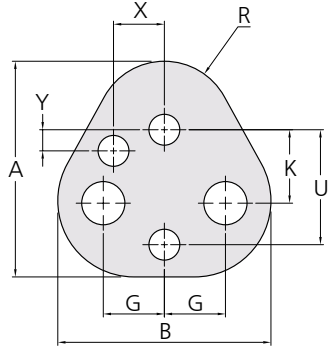
규격표기
방법

Catalog No.	D
SRT	13
SRTS	25



BACKING PLATE

BACKING PLATE



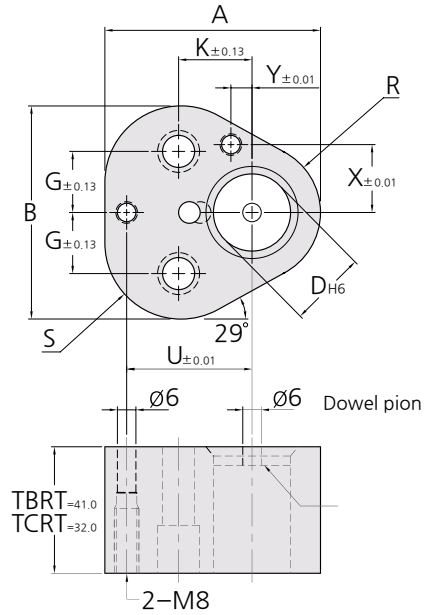
재질 SK4
T = 4.8
경도 HRC 48 ~ 50

Type	D	A	B	G	K	R	U	X	Y	E	FJ	H	적용 Retainer
10048HT	10	44.5	43.7	11.12	19.0	9.5	26.925	9.0	7.5	6.2	7.0	10.0	SRT SRTS
13048HT	13	50.8	50	14.27	19.0	12.7	29.970	12.0	6.5	6.2	7.0	10.0	
16048HT	16	54.0	53.2	15.87	19.0	14.3	31.750	13.5	6.0	6.2	7.0	10.0	
20048HT	20	60.3	59.5	17.47	19.0	17.5	33.530	16.5	5.0	6.2	7.0	12.0	
25048HT	25	69.9	69.1	19.84	23.8	22.2	40.640	22.0	7.0	6.2	7.0	14.0	
32048HT	32	69.9	69.1	19.84	23.8	22.2	40.640	22.0	7.0	6.2	7.0	14.0	



RETAINER - TCRT • TBRT PUNCH RETAINER

TCRT
TBRT



재질 SNCM 220
경도 HRC 58 ±2

Type		D	A	B	G	K	R	S	U	X	Y	Bolt
경하중용	중하중용											
TCRT	TBRT	10	44.5	43.7	11.1	19.0	9.5	12.0	26.925	9.0	7.5	M8
TCRT	TBRT	13	50.8	50.0	14.3	19.0	12.7	15.2	29.970	12.0	6.5	M8
TCRT	TBRT	16	54.0	53.2	15.9	19.0	14.3	16.8	31.750	13.5	6.0	M8
TCRT	TBRT	20	60.3	59.5	17.5	19.0	17.5	20.0	33.530	16.5	5.0	M10
TCRT	TBRT	25	69.9	69.1	19.8	23.8	22.2	24.7	40.640	22.0	7.0	M12
TCRT	TBRT	32	69.9	69.1	19.8	23.8	22.2	24.7	40.640	22.0	7.0	M12
TCRT	-	38	77.1	76.6	24.0	27.0	26.0	28.5	43.993	26.0	10.0	M12
-	TBRT	40	77.4	76.6	24.0	27.0	26.0	28.5	43.993	26.0	10.0	M12

규격표기
방법

Catalog No.

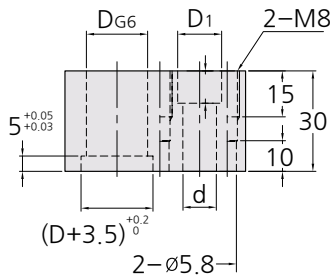
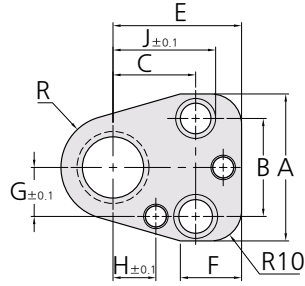
TCRT

D

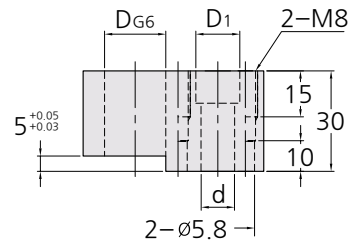
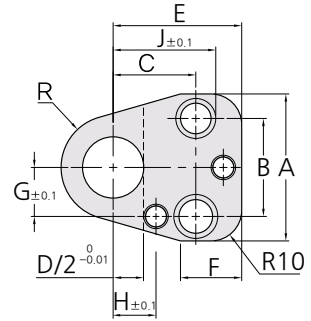
20



① SW-AR
(원형용)



② SW-FR
(이형용)

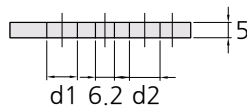


RETAINER 본체

재질 S45C

표면처리 사삼산화철피막

③ BP(BACKING PLATE)



재질 SK4

경도 HRC 56 ~ 60

Type	D	DG6	A	B	C	E	F	G	H	J	R	BCP	부속품		
SW-AR(①)	10	+0.014 +0.005	37	20	21	35	20	10	9	29	9.5	6.2	M8x40 TDP6-30 M8x8		
SW-AP	13	+0.017 +0.006	43	26	23	38		13	11	32	12		14	6.2	M10x40 TDP6-30 M8x8
(①+③)	16		44	24	26	40		16	14	36	17				
	20	+0.020 +0.007	48	28	27	42		18	17	39	19.5		23		10.2
	25		50		30	46		21	20	42	23				
SW-FR(①)	32	+0.025 +0.009	54	30	33	48		23	23	46	26	29.5	10.2	M12x40 TDP6-30 M8x8	
SW-FP	38		58		35	52	26	27	50	29.5					
(②+③)	45		64	34	38	56									

규격표기
방법

Catalog No.

SW-AP

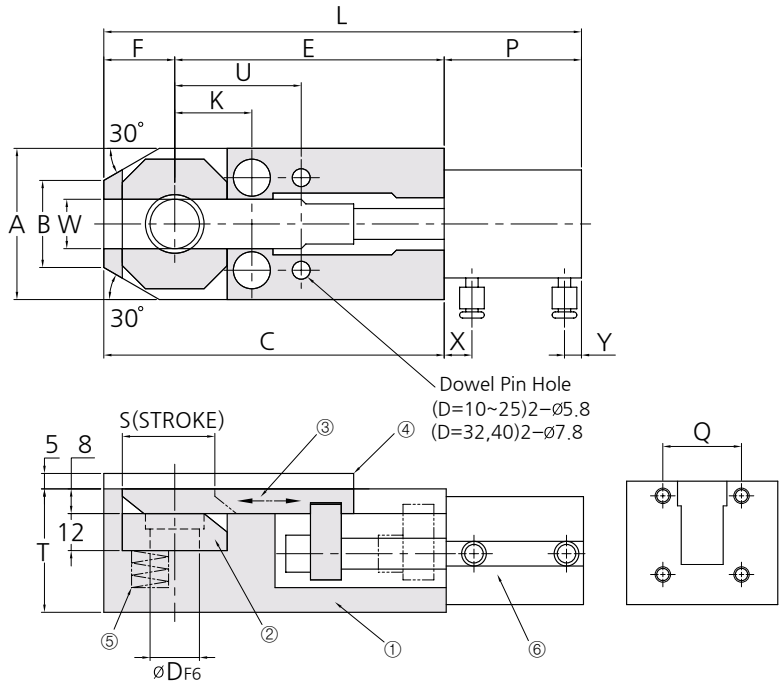
D

16

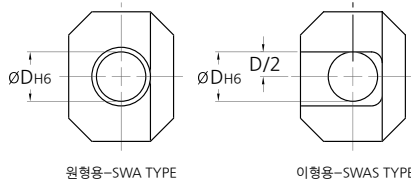


RETAINER – SWA • SWAS SELECT RETAINER

SWA
SWAS



PUNCH PLATE



부품표

NO	품명	재질	경도
1	RETAINER BASE	SK5C	-
2	PUNCH PLATE	SK4	HRC56~60
3	CAM	SK4	HRC56~60
4	BACK'G PLATE	SK4	HRC56~60
5	SPRING	-	-
6	AIR CYLINDER	-	-

부속부품표

D	DOWEL PIN	랜치 BOLT	무드 BOLT
10	$\phi 6 \times 30$	M8x50	M8x10
13~25	$\phi 6 \times 30$	M10x50	M10x10
32~40	$\phi 8 \times 30$	M12x50	M10x10



RETAINER – SWA • SWAS SELECT RETAINER

Catalog No.		D	L	A	B	C	E	F	K	Q	P	S	T	U	W	X	Y	Cylinder	적용 Punch		
원형용	이형용																				
SWA	SWAS	10		46																	
		13	160.5	50	30	111	86		25		49.5	30		41	16				20~30DM	TJX	
		16						25						40			9	5.5			TJ_
		20																			
		25	184.5	58	38	125	100		29		59.5	40			45	25				20~40DM	TPX
		32																			
		40	244.5	80	56	165	130	35	38	52	79.5	50	50	60	38	11	8		40~50DM	TP_	

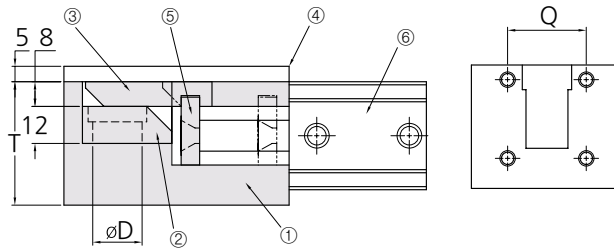
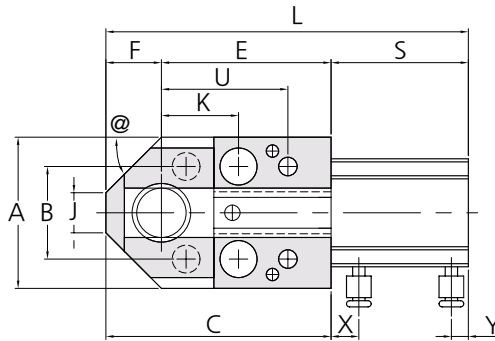
규격표기
방법

Catalog No.	D
SWA	20

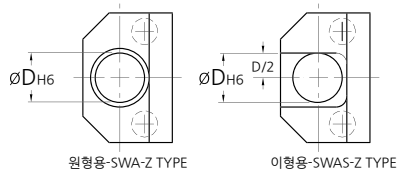


RETAINER - SWA-Z • SWAS-Z SELECT RETAINER

SWA-Z
SWAS-Z



PUNCH PLATE



원형용-SWA-Z TYPE

이형용-SWAS-Z TYPE

부품표

NO	품명	재질	경도
1	RETAINER BASE	S45C	-
2	PUNCH PLATE	SK3	HRC56~60
3	CAM	SK3	HRC56~60
4	BACK'G PLATE	SK3	HRC56~60
5	CAM GUIDE	S45C	-
6	AIR CYLINDER	-	-

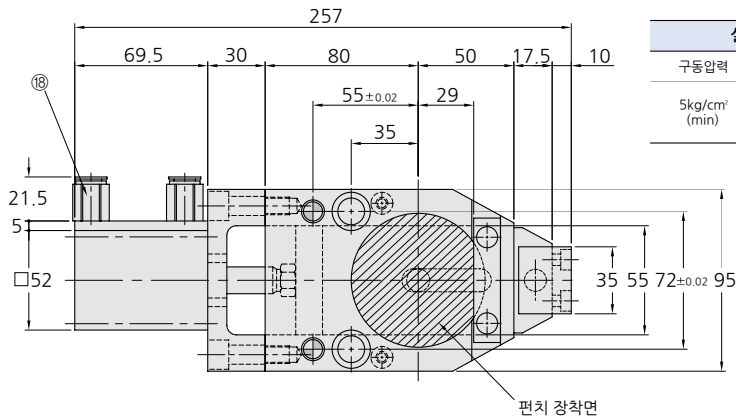
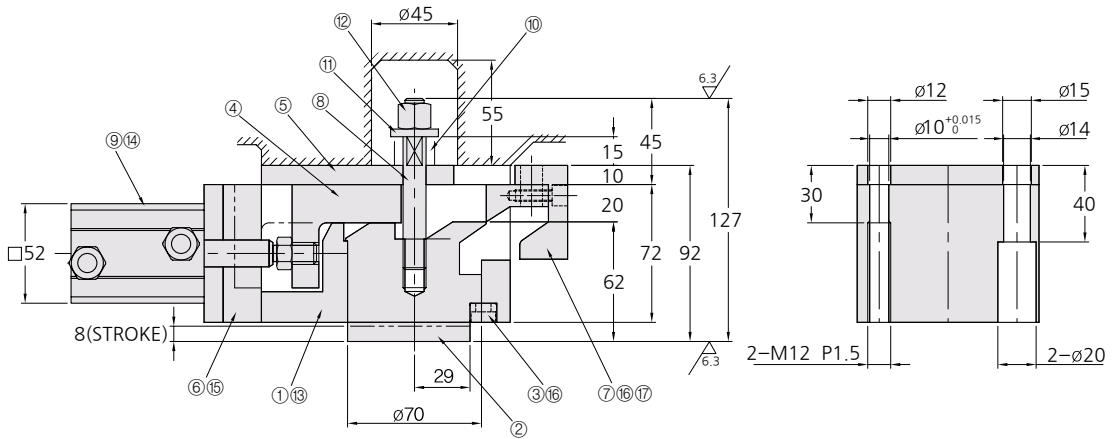
부속부품표

D	DOWEL PIN	렌치 BOLT	무드 BOLT	ONE-TOUCH COUPLERS
10	∅6x30	M8x50	M8x50	KGH06-M5
13~25	∅6x30	M10x50	M10x50	KGH06-M5
32~40	∅8x30	M12x50	M12x50	KGH06-015



RETAINER – SWPUG SELECT RETAINER

SWPUG



실린더		스프링	
구동압력	스트로크	초기압 N	후기압 N
5kg/cm ² (min)	30	96	206

NO	품 명	재 질	수량	NO	품 명	재 질	수량
①	슬라이드 케이스	S45C HRC 25~28	1	⑩	스프링	TR21-30	1
②	후로트 핀	S45C	1	⑪	와셔	SS400	1
③	키	SK3 HRC 40~45	1	⑫	하드록크 너트	S45C M10	1
④	슬라이드 플레이트	S45C HRC 55~60	1	⑬	⊕볼트	SCM435 M5x16	2
⑤	백킹 플레이트	S45C HRC 25~28	1	⑭	육각렌치 볼트	SCM435 M5x75	4
⑥	브로크	SS400	1	⑮	육각렌치 볼트	SCM435 M8x30	2
⑦	강제전환	S45C HRC 55~60	1	⑯	육각렌치 볼트	SCM435 M6x15	4
⑧	스탠드 볼트	SS400	1	⑰	암나사 노크핀	ø8x18	1
⑨	실린더	SSD-L-40-30N CKD	1	⑱	컨넥터		2



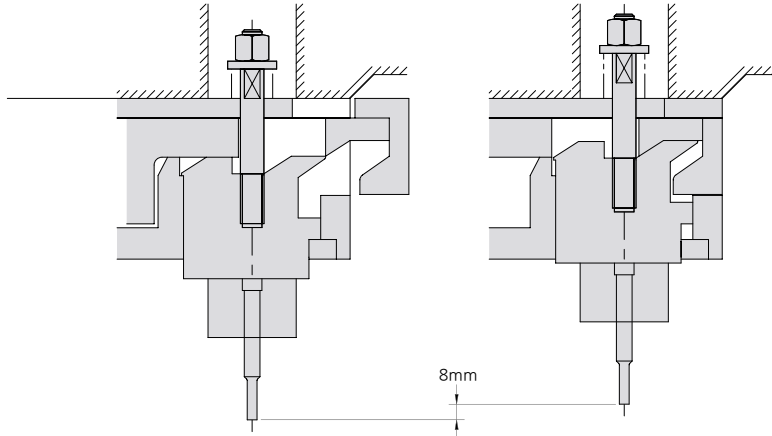
RETAINER – SWPUG SELECT RETAINER

Catalog No.	D
SWPUG	70

규격표기
방법

Catalog No.	D
SWPUG	70

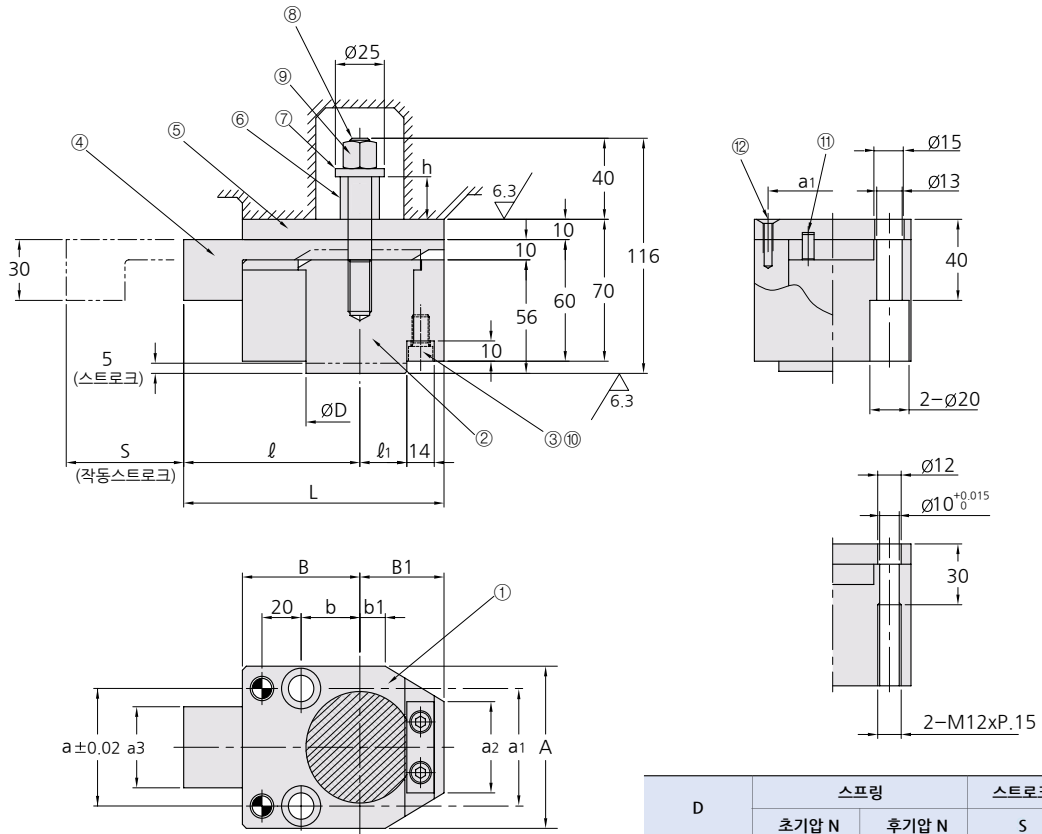
SWPUG 사용예





RETAINER – SWPUH SELECT RETAINER

SWPUH



D	스프링		스트로크
	초기압 N	후기압 N	S
55	23	52	60
70	35	64	75

NO	품명	재질	수량
①	슬라이드 케이스	S45C HRC 25~28	1
②	후로트 핀	SS400	1
③	키	SK3 HRC 40~45	1
④	슬라이드 플레이트	S45C HRC 55~60	1
⑤	백킹 플레이트	S45C HRC 25~28	1
⑥	스프링	SUP CS-A-20X2X32	1

NO	품명	재질	수량
⑦	와셔	SS400	1
⑧	스탠드 볼트	S45C Ø12x80	1
⑨	하드록 너트	S45C M10	1
⑩	육각렌치 볼트	SCM435 M6x15	2
⑪	스프링 핀	SUP Ø6x12	1



RETAINER – SWPUH SELECT RETAINER

D	L	ℓ	ℓ ₁	h	A	a	a ₁	a ₂	a ₃	B	B ₁	b	b ₁
55	133	90	24	23	80	58	66	45	40	60	43	30	13
70	145	95	29	21	95	72	80	60	55	65	50	35	18

Catalog No.	D
SWPUH	55
	70

규격표기
방법

Catalog No.	D
SWPUH	70

SWPUH 사용예

